

REVISION INFO

DATE
##/##/00

REVISIONS

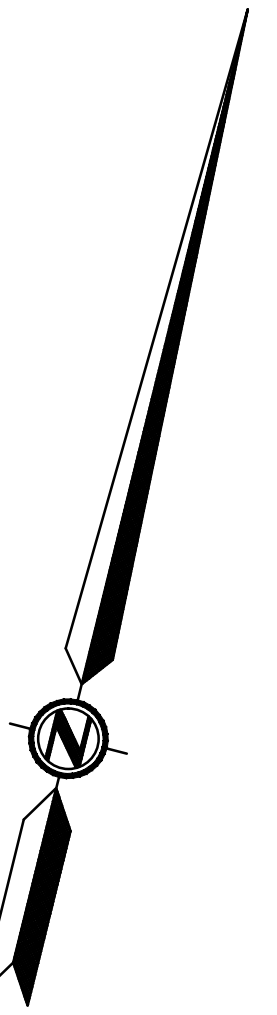
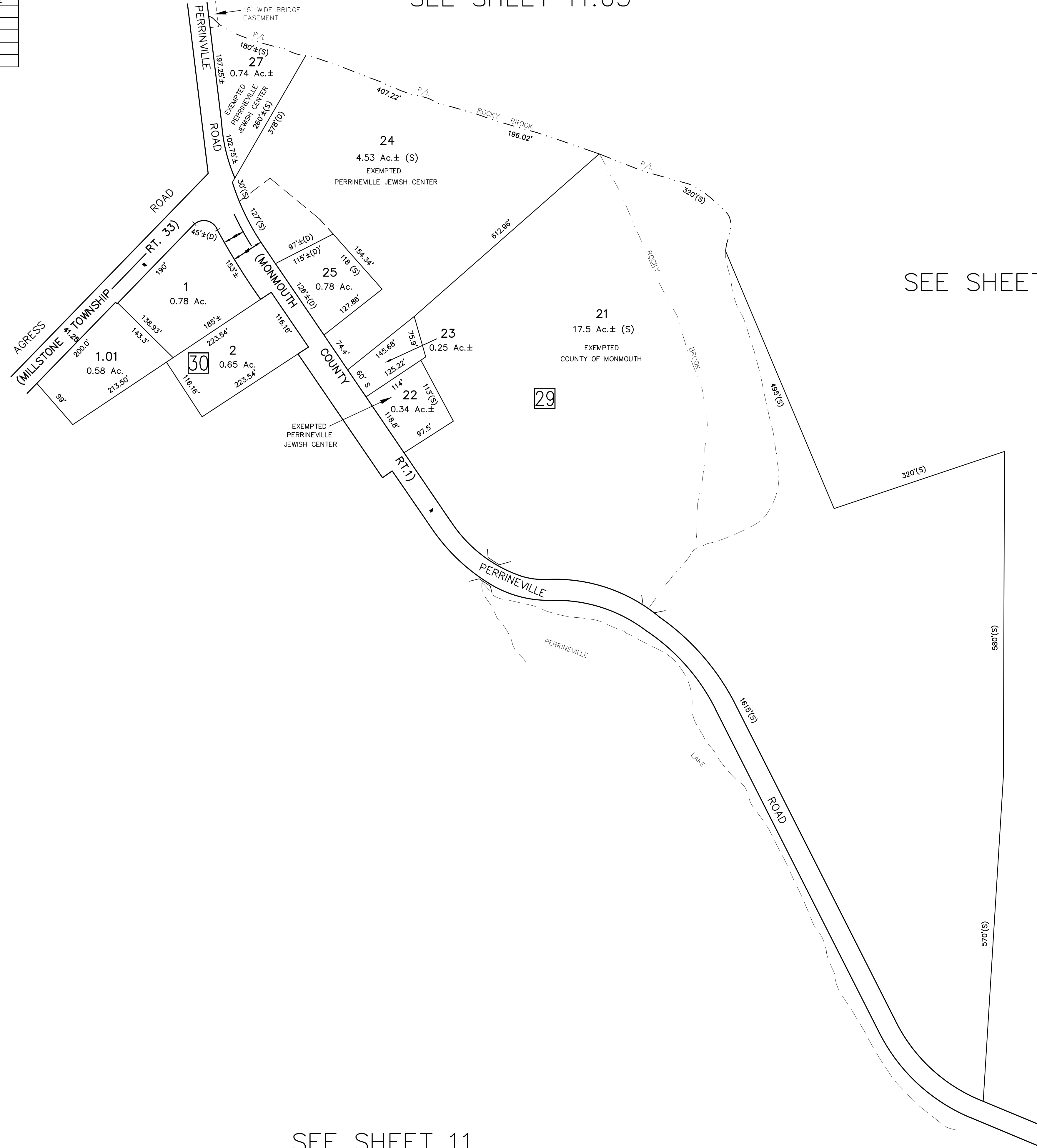
DATE	NAME	LIC. No.
##/##/01	RICHARD A. MORALLE, PLS.	25863
10/20/06	PETER R. AVAKIAN, P.L.S.	28142
1/25/08	PETER R. AVAKIAN, P.L.S.	28142

SEE SHEET 11.03

SEE SHEET 11

SEE SHEET 11

SEE SHEET 11.02



SEE SHEET 11

TAX MAP
TOWNSHIP OF MILLSTONE
MONMOUTH COUNTY, NEW JERSEY
 SCALE 1" = 100' JAN. 1961

PREPARED BY
 BAY POINTE ENGINEERING ASSOCIATES, INC.
 304 HAWTHORNE AVE.-P.O. BOX 1244
 POINT PLEASANT BEACH, NEW JERSEY

IN ASSOCIATION WITH
 AMERICAN AIR SURVEYS, INC
 907 PENN AVENUE-PITTSBURGH,PA

LEGEND

1 BLOCK NUMBER	(S)- SCALED DIMENSION OR AREA
3 PARCEL NUMBER	(D)- DEED DIMENSION OR AREA
	5- DEVELOPMENT LOT NUMBER

NOTE : TO SHOW CONDITIONS AS OF OCTOBER 1 1963