

REVISIONS

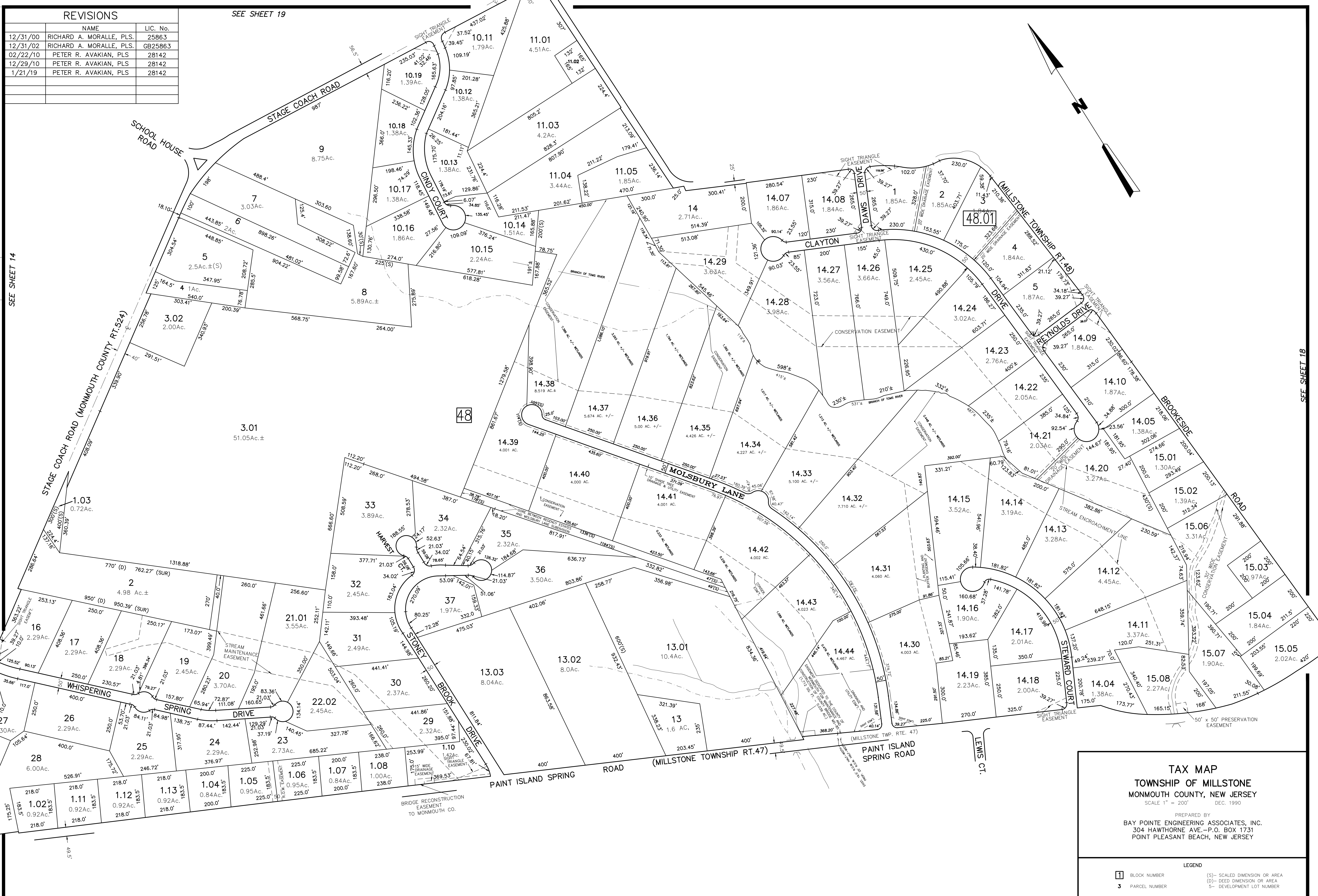
DATE	NAME	LIC. No.
12/31/00	RICHARD A. MORALLE, PLS.	25863
12/31/02	RICHARD A. MORALLE, PLS.	GB25863
02/22/10	PETER R. AVAKIAN, PLS	28142
12/29/10	PETER R. AVAKIAN, PLS	28142
1/21/19	PETER R. AVAKIAN, PLS	28142

SEE SHEET 19

REVISION INFO

DATE	REVISION
12/31/02	FINAL PLAT / MAJOR SUB. BL. 48, LT.2, 14.02 & 14.06

SEE SHEET 14



**TAX MAP**  
**TOWNSHIP OF MILLSTONE**  
**MONMOUTH COUNTY, NEW JERSEY**  
 SCALE 1" = 200' DEC. 1990

PREPARED BY  
 BAY POINT ENGINEERING ASSOCIATES, INC.  
 304 HAWTHORNE AVE.-P.O. BOX 1731  
 POINT PLEASANT BEACH, NEW JERSEY

**LEGEND**

1 BLOCK NUMBER (S)- SCALED DIMENSION OR AREA  
 3 PARCEL NUMBER (D)- DEED DIMENSION OR AREA  
 5- DEVELOPMENT LOT NUMBER

SEE SHEET 20

SEE SHEET 20.01

SEE SHEET 18